

Welcome to Methodist Health System!

Dress Code/Uniform Order Guide



The organization's uniforms are an integral part of improving patient care, safety and the overall patient experience. Such programs have been shown to help foster communication and reduce anxiety for patients and their family members who are confused about the various hospital personnel and roles they have in providing care and service. Hospital personnel wearing color-coded uniforms are perceived as being more professional and approachable.

The uniform brand Cherokee has been selected to be the official uniform brand for clinical disciplines. You may purchase the Cherokee uniform from any vendor, but the brand must be Cherokee.

You may order your polo shirt and/or oxford shirt, including embroidered logo from one of four vendors: V's Uniforms in Omaha, Great Plains Uniforms in Omaha, Coberly's Real Images in Council Bluffs or the Methodist Health System Company Store (Trademark Uniforms does not stock polos/oxfords).

Please order your uniform as soon as you have accepted your position. If you start work before your uniform is available, please discuss options for appropriate attire with your supervisor.

■ If you are hired for the hospitals **Methodist Hospital, Women's Hospital and Methodist Jennie Edmundson:**

- Completely review this brochure for Logo, Vendor and Uniform Style/Color by Discipline.
- Please Note:
 - New employees in the Patient Care Division at Methodist and Women's Hospital are expected to be in their new uniforms within 3 weeks of start date.
 - Hospital staff in the areas listed here are provided/launched scrubs. Contact your supervisor if you have questions as to whether or not your position falls in this category.
 - ▶ Sterile Processing, Operating Room (OR) Supply, Labor and Delivery, designated staff in NICU (Neonatal Nurse Practitioners and the team of nurses who respond to urgent or emergency deliveries), Anatomic Pathology, Pathologists, Pharmacy staff assigned to do medication delivery into the OR Core and outpatient core areas and all Surgical Services staff.
 - If you are hired for Central Supply, see your supervisor for ordering guidelines.

■ If you are hired for **MHS Corporate Offices, Methodist Physicians Clinic or Methodist College:**

- Please contact your supervisor to discuss dress code/uniform guidelines for your position/department.

Please review this information before placing your order. This information, with links, is also available on [mhsintranet/Human Resources/Uniforms](#). When you are ready to order, contact your preferred vendor.

Logos – 3 options are available with full color embroidered logo (white, royal blue & black). Please indicate your logo selection when ordering.

"Methodist"
with heart/dove



Heart/dove
only



"Methodist Jennie Edmundson"
with heart/dove



Uniform Order Vendors

- The uniform brand Cherokee has been selected to be the official uniform brand for clinical disciplines. You may purchase the Cherokee uniform from any vendor, but the brand must be Cherokee.
- If you purchase your uniform at **V's Uniforms**, they provide a 35% discount on Cherokee uniform orders and will automatically complete logo embroidery.
- If you purchase your uniform at **Trademark Uniforms**, effective February 24, 2020, they provide a 20% discount on Cherokee uniform orders and will automatically take your ordered uniform for embroidery.
- Whether you purchase your uniform at **Great Plains Uniforms** or another vendor, Great Plains Uniforms will complete logo embroidery.
- If you purchase your uniform elsewhere, either **Great Plains Uniforms** (listed above) or **Coberly's Real Images** (Council Bluffs) are approved area embroidery vendors who have agreed to embroider uniforms purchased elsewhere.
- Note: Once your uniform has been embroidered, the sale is considered final. Check with your specific vendor for details or questions.



Polo Shirt/Oxford Shirt Vendors

You may order your polo shirt and/or oxford shirt, including embroidered logo from one of four vendors: V's Uniforms in Omaha, Great Plains Uniforms in Omaha, Coberly's Real Images in Council Bluffs or the Methodist Health System Company Store (Trademark Uniforms does not stock polos/oxfords).

Resources

V's Uniforms | 7620 Dodge Street • Omaha, NE 68114 • 402-392-2291

(35% discount on Cherokee uniform orders. Will automatically complete logo embroidery, order polo shirts/oxford shirts with embroidered logos)

Trademark Uniforms | 3139 Oak View Drive • Omaha, NE 68144 • 531-301-5854

(Effective February 24, 2020, 20% discount on Cherokee uniform orders. Will automatically take your uniform for logo embroidery)

Great Plains Uniforms | 4308 S. 89th Street • Omaha, NE 68127 • 402-934-4701

(Cherokee uniforms, will automatically complete logo embroidery, order polo shirts/oxford shirts with embroidered logos)

Coberly's Real Images | 2730 W. Broadway • Council Bluffs, IA 51501 • 712-256-5950

(take your Cherokee uniform order purchased from another vendor for logo embroidery, order polo shirts/oxford shirts with embroidered logos)

Methodist Health System Company Store (order polo shirts/oxford shirts with embroidered logos). From mhsintranet home page, select Resources/Employee Shopping/Safety & Style Uniforms – Polos and Oxfords.

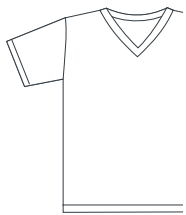
Cherokee Uniform Catalog (Click on the button at the bottom right hand corner of the Cherokee uniform sitepage to download the latest catalog to view styles and sizing in your discipline's selected color. You may then place your Cherokee order from an online vendor of your choice as the Cherokee catalog link does not have online sales.)
<http://www.cherokeeuniforms.com>

Please note: Departments may have additional requirements outlined in departmental specific policies. If you have questions about uniform guidelines for your department or position, please ask your supervisor.

Uniform Color Selection/Style by Discipline

Admitting/Registration/Greeters

Methodist Hospital and Women's Hospital



Black, royal blue or tropical pink polo shirt, short sleeve or long sleeve dress shirt (all with embroidered logo), black dress pants or black scrub pants, black scrub jacket with embroidered logo may be worn over the polo or dress shirt.

Clinical Documentation

Methodist Hospital, Methodist Jennie Edmundson, and Women's Hospital



Khaki jacket

Clinical Nurse Specialist (CNS)

Methodist Hospital, Methodist Jennie Edmundson, and Women's Hospital



RN color with white lab coat, when not in professional dress.

Clinical Nutrition Staff

(Registered Dietitians and Dietetic Technicians)

Methodist Hospital, Methodist Jennie Edmundson, and Women's Hospital



Teal Blue or professional dress with lab coat.

Clinical Nutrition Staff in Infant Nutrition Lab

Women's Hospital



Teal Blue or professional dress with lab coat.



Uniform Color Selection/Style by Discipline (Cont'd.)

ED Paramedics

Methodist Hospital and Women's Hospital



Methodist Jennie Edmundson



ED Techs

Methodist Hospital, Methodist Jennie Edmundson, and Women's Hospital



Imaging

Methodist Hospital, Methodist Jennie Edmundson, and Women's Hospital



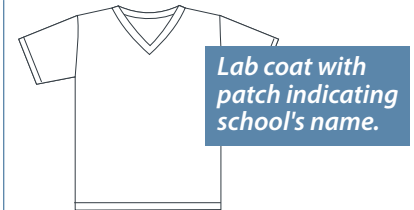
Infection Prevention

Methodist Hospital



Instructors

Methodist Hospital, Methodist Jennie Edmundson, and Women's Hospital



Integrated Services

Methodist Hospital, Methodist Jennie Edmundson, and Women's Hospital



Lab

Women's Hospital and Phlebotomists at Methodist Hospital



For all other lab positions at Methodist Hospital, see your supervisor.

Methodist Jennie Edmundson



Lactation Consultants

Methodist Hospital, Methodist Jennie Edmundson, and Women's Hospital



Pewter with white lab coat or may wear professional attire with lab coat.

LPN

Methodist Jennie Edmundson



Non-Invasive Cardiac Unit

Methodist Hospital, Methodist Jennie Edmundson, and Women's Hospital



Nursing Assistant

Methodist Hospital, Methodist Jennie Edmundson, and Women's Hospital



Perinatal Clinic

Women's Hospital



RN's – Pewter

Women's Hospital



Ultrasound Techs – Black



Uniform Color Selection/Style by Discipline (Cont'd.)

Pharmacy

Methodist Hospital, Methodist Jennie Edmundson, and Women's Hospital



Navy Blue

Navy Blue or professional dress.

Radiation Oncology

Methodist Hospital, Methodist Jennie Edmundson, and Women's Hospital



Pewter

RN's – Pewter

Methodist Hospital, Methodist Jennie Edmundson, and Women's Hospital



Eggplant

Other Clinical Staff – Eggplant

Registered Nurse (RN)

Methodist Hospital, Methodist Jennie Edmundson, and Women's Hospital



Pewter

Respiratory

Methodist Hospital, Methodist Jennie Edmundson, and Women's Hospital



Wine

Secretaries

Women's Hospital



Pink

Pink polo shirt or oxford style shirt with black pants, black lab jacket with embroidered logo may be worn over the polo.

Secretaries – Unit

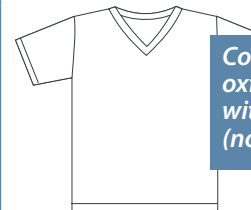
Methodist Jennie Edmundson



Polos or oxford style shirt (any color) under black jacket.

Service Secretaries

Methodist Hospital



Colored polo or oxford style shirt with black slacks (not scrub pants).

Sleep Center

Methodist Jennie Edmundson



Navy Blue

Staff Development Nurse (SDN)

Methodist Hospital, Methodist Jennie Edmundson, and Women's Hospital



Pewter

RN color with white lab coat, when not in professional dress.

Telemetry Techs

Methodist Hospital, Methodist Jennie Edmundson, and Women's Hospital



Royal Blue

Therapy Services

Methodist Hospital and Women's Hospital



Galaxy Blue

Methodist Jennie Edmundson*



Turquoise

** Note: New color effective 11/27/18 as previous color of Mali-Blu has been discontinued.*