



Welcome to Methodist Fremont Health!

Dress Code/Uniform Order Guide

The Methodist Fremont Health uniforms are an integral part of improving patient care, safety and the overall patient experience. Such programs have been shown to help foster communication and reduce anxiety for patients and their family members who are confused about the various hospital personnel and roles they have in providing care and service. Staff wearing color-coded uniforms are perceived as being more professional and approachable.

The uniform brand Cherokee has been selected to be the official uniform brand for clinical disciplines. You may purchase the Cherokee uniform from any vendor, but the brand must be Cherokee.

Please order your uniform as soon as you have accepted your position. If you start work before your uniform is available, please discuss options for appropriate attire with your supervisor.

- If you are hired for Central Supply, see your supervisor for ordering guidelines.

Logos – 3 options are available with full color embroidered logo (white, royal blue & black). Please indicate your logo selection when ordering.

Methodist with
heart and dove



Heart and
dove only



Methodist Fremont
Health with heart
and dove



Uniform Order Vendors / Resources

The uniform brand Cherokee has been selected to be the official uniform brand for clinical disciplines. You may purchase the Cherokee uniform from any vendor, but the brand must be Cherokee.

Embroidery Connection | 2260 N. Hancock Street • Fremont, NE 68025 • 402-721-6686
(Cherokee uniforms, will automatically complete logo embroidery)

V's Uniforms | 2920 S. 84th St. • Omaha, NE 68124 • 402-392-2291
(35% discount on Cherokee uniform orders. Will automatically complete logo embroidery)

Trademark Uniforms | 3139 Oak View Drive • Omaha, NE 68144 • 531-301-5854
(20% discount on Cherokee uniform orders. Will automatically take your uniform for logo embroidery)

Great Plains Uniforms | 4308 S. 89th Street • Omaha, NE 68127 • 402-934-4701
(take your Cherokee uniform order purchased from another vendor for logo embroidery)

Coberly's Real Images | 2730 W. Broadway • Council Bluffs, IA 51501 • 712-256-5950
(take your Cherokee uniform order purchased from another vendor for logo embroidery)

Methodist Health System Company Store (order polo shirts/oxford shirts with embroidered logos). From mhsintranet home page, select Resources/Employee Shopping/Safety & Style Uniforms – Polos and Oxfords.

Cherokee Uniform Catalog (Click on the button at the bottom right hand corner of the Cherokee uniform sitepage to download the latest catalog to view styles and sizing in your discipline's selected color. You may then place your Cherokee order from an online vendor of your choice as the Cherokee catalog link does not have online sales.)
<http://www.cherokeeuniforms.com>



Uniform Color Selection/Style by Discipline

Admitting/ Registration/Greeters

*Please see
your manager*

Clinical Nutrition Staff (Registered Dieticians and Dietetic Technicians)



*Teal Blue or
professional
dress with
lab coat.*

ED Techs



Home Health and Hospice – Aides



Home Health and Hospice – RN's



Home Health and Hospice – Therapy



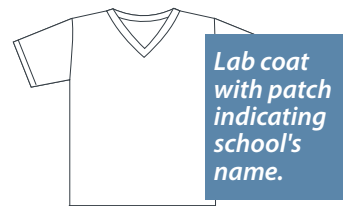
Imaging



Infection Prevention

*Professional
attire*

Instructors



Integrated Services



Lab



Lactation Consultants

*House scrubs or
Professional attire*

LPN



Non-Invasive Cardiac



Nursing Assistant



Uniform Color Selection/Style by Discipline (Cont'd.)

Pharmacist



Navy Blue

Navy Blue or professional dress with lab coat.

Pharmacy Tech



Navy Blue

Radiation Oncology



Pewter

Registered Nurse (RN)



Pewter

Respiratory



Wine

Secretaries – Unit



Caribbean Blue

Staff Development Nurse (SDN)

Professional attire and lab coat

Therapy Services

Inpatient



Galaxy Blue

Outpatient

See your supervisor

If you are hired for Dunklau Gardens –

Professional Nurses (RN's and LPN's at the bedside)



Royal Blue

Med Aides/CNA's and Health Unit Secretaries



Eggplant

Eggplant tops and lab jackets with black pants.